

SERPINA3 Antibody (monoclonal) (M01)

Mouse monoclonal antibody raised against a full length recombinant SERPINA3.

Catalog # AT3818a

Specification

SERPINA3 Antibody (monoclonal) (M01) - Product Information

Application	WB, IHC, IP
Primary Accession	P01011
Other Accession	BC003559
Reactivity	Human
Host	mouse
Clonality	Monoclonal
Isotype	IgG1 Kappa
Calculated MW	47651

SERPINA3 Antibody (monoclonal) (M01) - Additional Information**Gene ID 12****Other Names**

Alpha-1-antichymotrypsin, ACT, Cell growth-inhibiting gene 24/25 protein, Serpin A3, Alpha-1-antichymotrypsin His-Pro-less, SERPINA3, AACT

Target/Specificity

SERPINA3 (AAH03559, 25 a.a. ~ 423 a.a) full-length recombinant protein with GST tag. MW of the GST tag alone is 26 KDa.

Dilution

WB~~1:500~1000

IHC~~1:100~500

IP~~N/A

Format

Clear, colorless solution in phosphate buffered saline, pH 7.2 .

Storage

Store at -20°C or lower. Aliquot to avoid repeated freezing and thawing.

Precautions

SERPINA3 Antibody (monoclonal) (M01) is for research use only and not for use in diagnostic or therapeutic procedures.

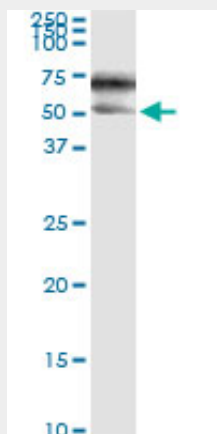
SERPINA3 Antibody (monoclonal) (M01) - Protocols

Provided below are standard protocols that you may find useful for product applications.

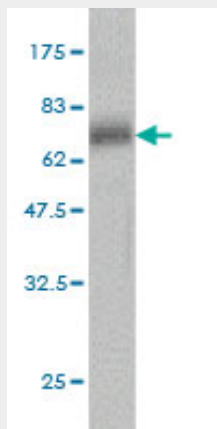
- [Western Blot](#)

- [Blocking Peptides](#)
- [Dot Blot](#)
- [Immunohistochemistry](#)
- [Immunofluorescence](#)
- [Immunoprecipitation](#)
- [Flow Cytometry](#)
- [Cell Culture](#)

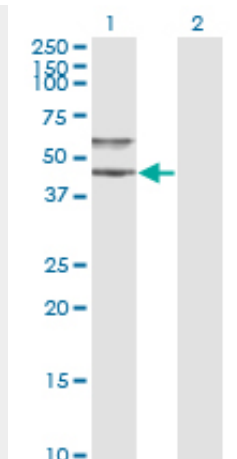
SERPINA3 Antibody (monoclonal) (M01) - Images



Immunoprecipitation of SERPINA3 transfected lysate using anti-SERPINA3 monoclonal antibody and Protein A Magnetic Bead ([U0007](#)), and immunoblotted with SERPINA3 MaxPab rabbit polyclonal antibody.



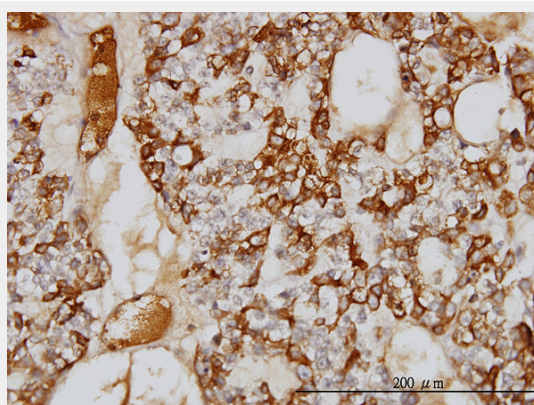
Antibody Reactive Against Recombinant Protein. Western Blot detection against Immunogen (69.63 KDa) .



Western Blot analysis of SERPINA3 expression in transfected 293T cell line by SERPINA3 monoclonal antibody (M01), clone 1E6.

Lane 1: SERPINA3 transfected lysate(47.7 KDa).

Lane 2: Non-transfected lysate.



Immunoperoxidase of monoclonal antibody to SERPINA3 on formalin-fixed paraffin-embedded human ovary, clear cell carcinoma. [antibody concentration 1 ug/ml]

SERPINA3 Antibody (monoclonal) (M01) - Background

The protein encoded by this gene is a plasma protease inhibitor and member of the serine protease inhibitor class. Polymorphisms in this protein appear to be tissue specific and influence protease targeting. Variations in this protein's sequence have been implicated in Alzheimer's disease, and deficiency of this protein has been associated with liver disease. Mutations have been identified in patients with Parkinson disease and chronic obstructive pulmonary disease.

SERPINA3 Antibody (monoclonal) (M01) - References

Variation at the NFATC2 Locus Increases the Risk of Thiazolinedione-Induced Edema in the Diabetes REduction Assessment with ramipril and rosiglitazone Medication (DREAM) Study. Bailey SD, et al. Diabetes Care, 2010 Jul 13. PMID 20628086. Is there an association of regulatory region polymorphism in the alpha-1-antichymotrypsin gene with sporadic Alzheimer's disease in the northern Han-Chinese population? Yu G, et al. J Clin Neurosci, 2010 Jun. PMID 20378355. Proteomic analysis of plasma from patients undergoing coronary artery bypass grafting reveals a protease/antiprotease imbalance in favor of the serpin alpha1-antichymotrypsin. Banfi C, et al. J Proteome Res, 2010 May 7. PMID 20302328. alpha(1)-Antichymotrypsin deficiency associated with liver cirrhosis. Ortega L, et al. Pediatr Int, 2010 Feb. PMID 20158662. Inhibition of heat- and

chemical-induced aggregation of various proteins reveals chaperone-like activity of the acute-phase component and serine protease inhibitor human alpha(1)-antitrypsin. Zsila F. Biochem Biophys Res Commun, 2010 Mar 5. PMID 20117085.